

Alaska Department of Fish and Game

Habitat Section
Southeast Region



East Port Frederick Uncataloged Stream

ADDITION

Water body name:

Survey date: 8/23/2022

Quad: Juneau A-5

Species & Lifestage:

Upper Reach Latitude: 58.043084 **Longitude:** -135.548362

Survey crew: FC, RR

Lower Reach Latitude: 58.043715 **Longitude:** -135.551157

Findings: We surveyed this uncataloged stream using a backpack electrofisher and GPS. We captured juvenile coho salmon, cutthroat trout, and sculpin. The stream descends a 6-8% gradient and flows through a gravel channel into the intertidal (Table 1; Figures 1, 2).

Recommendations: Add this uncataloged stream to the anadromous waters catalog for rearing coho salmon (Figure 3).

Nomination: Pending

Table 1.—Uncataloged stream survey data.

Waypoint	Latitude	Longitude	Notes	Stream Width ft	Stream Substrate	Habitat Features	Gradient %	Sample Effort	Sample Results
1464	58.043110	-135.548344	Start of survey on small stream in intertidal zone. 1-yr CO capture just downstream of rootwad falls that may preclude adult passage. Advancing upstream.	4-6	Small Gravel Large Gravel		2-4	EF	2 CO 1 CT 2 SC
1465	58.042988	-135.548171	Gradient increasing and likely precludes anadromous fish passage. Continued resident fish capture.	4-6	Small Gravel Large Gravel	Incised Channel	6-8	EF	2 CT



Figure 1.—Juvenile coho salmon captured at waypoint 1464.



Figure 2.—Downstream view of channel near intertidal at waypoint 1464.

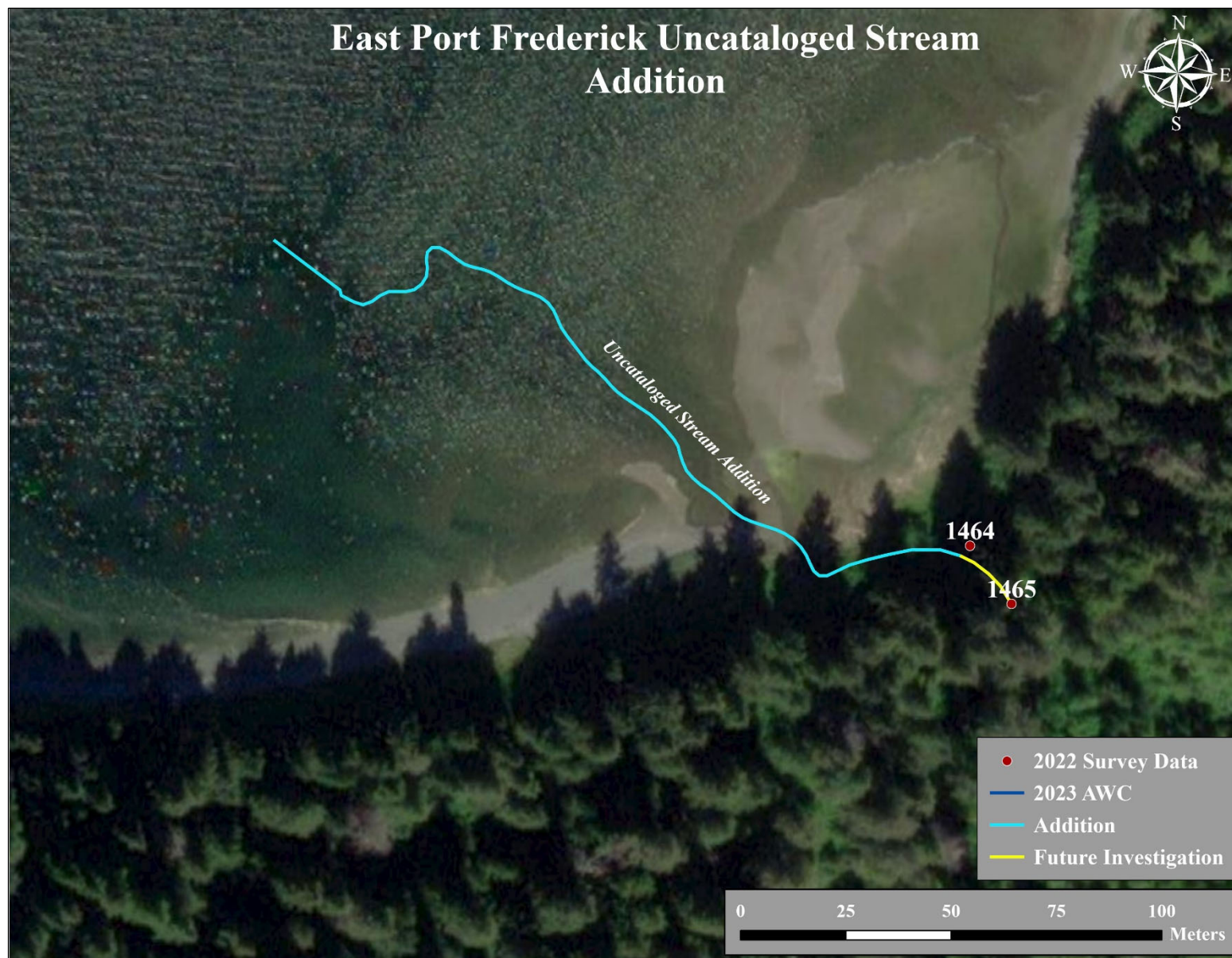


Figure 3.—Uncataloged stream addition map.